



B A C W A
B A Y A R E A
C L E A N W A T E R
A G E N C I E S

BACWA Hot Topics

Recycled Water!

BACWA Annual Members Meeting
January 30, 2015



- 1. Bay Area Recycled Water Commercial Truck Fill Facilities Location Guide**
- 2. Proposition 84 and Proposition 1 Funding**

Recycled Water Commercial Truck Fill Facilities

Purpose

To provide a summary of existing recycled water fill programs, requirements, and relevant information that a recycled water truck hauler would want to know before visiting a fill facility. The guide is a resource that can be used by Caltrans, water districts and contractors in the Bay Area.



Recycled Water Commercial Truck Fill Facilities

Survey

- Program and contact info
- Training
- Signage requirements
- Vehicle inspection
- RW hauler authorization and service boundaries
- Pricing and fees
- Hydrant fill facilities along distribution system
- Fill facilities at a recycled water treatment plant
- Final survey notification
- Future plans for agencies w/o truck fill facilities



Bay Area Recycled Water
Commercial Truck Fill Facilities Location Guide
January 2015



 WHITLEY BURCHETT & Associates

Recycled Water Commercial Truck Fill Facilities

Results

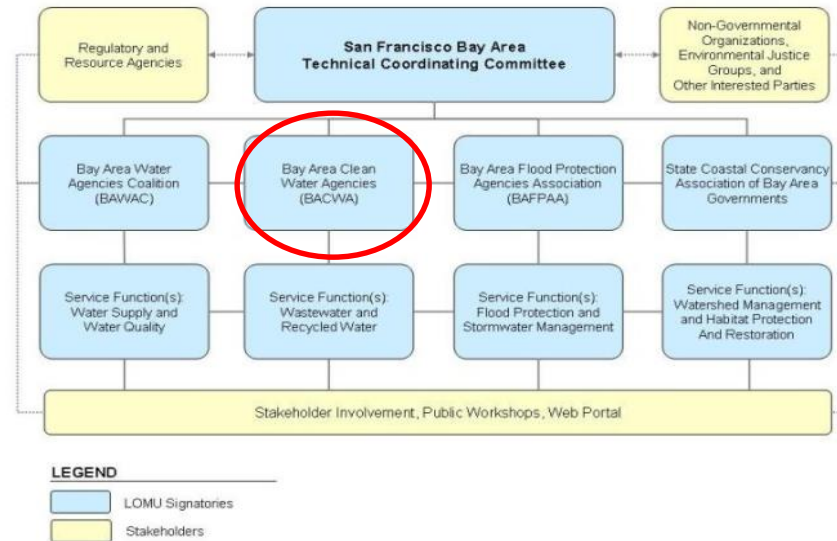
- **52 survey responses were received out of 100 survey invitations**
- **20 agencies responded that they have fill facilities**
- **2 agencies plan to have facilities operational in 2015**
- **13 agencies may consider fill facilities in the future**



Recycled Water Commercial Truck Fill Facilities

EAST BAY MUNICIPAL UTILITY DISTRICT 510.287.1346 www.ebmud.com	
Recycled Water Fill Facilities: Treatment Plant Yes	Distribution System No Can water be used outside of this agency's service area? Check with EBMUD
Hydrant Fill Facilities	
Location: None Number of Fill Facilities: Quality: Quantity Limitations per Trip: Other Restrictions: Additional Access Information: www.ebmud.com , search "Recycled Water Truck Program"	Connection Device: Truck Size Limits: Truck Weight Limits:
Fill Facilities at Treatment Plant	
Locations: 1) EBMUD Wastewater Treatment Plant, Oakland 2) North Richmond Water Recycling Plant, Richmond	
Quality: Disinfected Tertiary Quantity Limitations per Trip: No Minimum Maximum up to truck limit Quantity Limitations per Day: No Minimum No Maximum Additional Access Information: 1) EBMUD Wastewater Treatment Plant - enter through the main security gate at the plant to obtain access to the fill hydrant. 2) North Richmond Plant - hydrant is located outside of the plant gate and is accessible with a hydrant key.	Type of Connection: Hydrant Hours: 24 hrs/day, 7 days/wk Appointment Required: Only for first visit Truck Size Limits: None Truck Weight Limits: None
Training	
Required: Yes Who: Truck Driver Schedule: By Appointment Length of time to become authorized truck hauler: 5 business days	Duration: 15 minutes Frequency: Once Location: Recycled Water Plant
Signage	
Area Use Signage Required: No Signs Provided by Water Agency: N/A	Vehicle Signage Required: Yes Signs Provided by Water Agency: Yes
Vehicle Inspection	
Required: Yes Duration: Less than 1 hour How to schedule: To be conducted at time of training	Inspection Location: Recycled Water Plant Re-inspection Required: No
Fees	
Water: No Charge Connection Device: No Charge Vehicle Signage: No Charge Other:	Training: No Charge Permit: No Charge Use Area Signage: N/A

Bay Area Integrated Regional Water Management Plan



- Functional Area Representative
- Prop. 50: \$12.5M/\$8.5M for recycling
- Proposition 84 Round 1: \$30M/\$10M for recycling
- Proposition 84 Round 2: \$20M/\$4.9M for recycling
- Drought Round: \$32M/\$12.7M for recycling

Proposition 84

Round 3

- \$41M for Bay Area

2015 Round Prop. 84 Implementation Grant (Pending Appropriation; no earlier than FY 15-16)

Activities

Release Draft Program Guidelines & PSP

Release Final Program Guidelines & PSP

Applications Due

Announce Draft Recommendations

for Public Review & Comment

Announce Final Awards

Schedule

Spring 2015

Summer 2015

Fall 2015

Winter 2015/16

Spring 2016

Proposition 84

- Round 3 schedule may change if drought continues
- Another “Drought Round” could be authorized
 - No details known at this time



Proposition 1

Category	Dept	Program	Amount
Safe Drinking Water	SWRCB	Wastewater Treatment Projects	\$66.3
	SWRCB	Safe Drinking Water in Small DACs	\$69.2
Watershed Protection and Restoration	State Conserv	Watershed Projects	\$83.5
	Wildlife Cons Board	Enhanced Stream Flow Projects	\$38.9
	Santa Monica & San Gabriel Conserv	Urban Rivers and Creeks	\$19.1
	Dept Fish & Wildlife	Watershed Restoration Projects (Non-Delta & In-Delta)	\$36.5

Proposition 1

Category	Dept	Program	Amount
Regional Water Reliability	DWR	IRWM Program	\$32.8
	DWR	Water Conservation	\$23.2
	SWRCB	Stormwater Management	\$0.6
Water Storage	DWR	Statewide Water System Operational Improvement	\$3.3
Water Recycling	DWR	Water Recycling & Desalination	\$5.5
	SWRCB	Water Recycling and Treatment Technology Projects	\$131.7
Groundwater Sustainability	DWR	GW Management Planning	\$21.3
	SWRCB	GW Contamination	\$0.6
Total			\$532.5

Proposition 1

- **Funding for grants and loans**
 - **Grant cost share of 50%**
- **No firm schedule until July 2015 when funds are appropriated**
- **Estimated schedule for IRWM funds**
 - **Draft guidance Fall/Winter 2015**
 - **Guidance for other funding categories may be released sooner... or later!**