

Easements: Operations & Maintenance

Paul Seitz, P.E.

Collection System Operations Division Manager

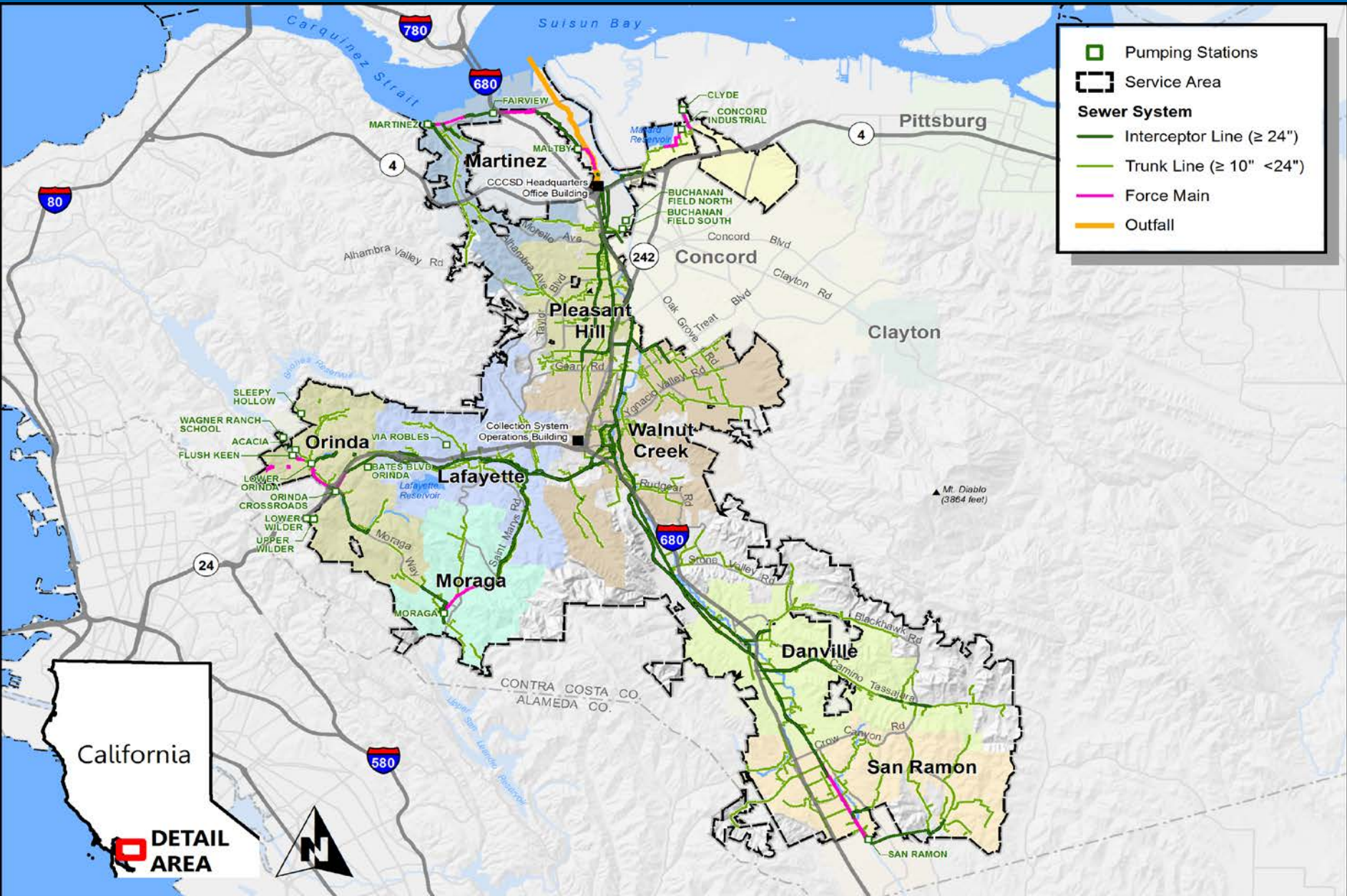
April 9, 2015



Central Contra Costa Sanitary District

Service Area

- Pumping Stations
- Service Area
- Sewer System**
 - Interceptor Line (≥ 24")
 - Trunk Line (≥ 10" <24")
 - Force Main
 - Outfall



California

DETAIL AREA

Sanitary Sewers

- **1,500 miles of Gravity Sewer**
- **Service Area is 164 square miles**
- **Serve a population of 461,000**
- **115,472 Service Connections**
- **Pipe size range: 4" to 102" inches**
- **Average daily flow conveyed: 34 MGD**



Age of Collection System

- 0 – 10 Years: 9.3%
- 10 – 50 Years: 64.2%
- 50 – 100 Years: 23.9%

*2.6% of our pipes do not have a construction year associated with them; hence, percentage does not add up to 100%. Our oldest sewers are from 1913.

- 435 miles of easement lines



Equipment & Personnel

- 6 Rodding Trucks
- 5 Hydro Trucks
- 3 TV Trucks
- 2 Construction Crews
- 1 USA Locating Crew
- 40 Field Personnel



Equipment



Hand Rodding



Hand Rodding



Hand Rodding



Snatch Block

- Easy to access hard to reach areas with little preparation work
- Reduces the need for additional crew, reducing labor costs
- Decreases worker related injuries in lieu of hand rodding
- Reliable and efficient hydro cleaning procedure



Snatch Block

- Developed the Snatchblock process for cleaning hard to access easement lines
 - This reduced our hand rod lines from over 1,000 to the current number of 26.



Snatch Block



Snatch Block



Snatch Block



Snatch Block



Snatch Block



Snatch Block



Snatch Block



Snatch Block



Snatch Block



Maintenance Agreements

- Tree Trimming
- Brush and Poison Oak Clearing
- Fencing



Brush and Poison Oak Clearing



Brush and Poison Oak Clearing



Structure Access



Structure Access



Structure Access



Homeowner Management

- Communications
- Notifications
- CMMS Notes
- Golden Rule – treat their property as if it were yours



Questions?

