

# Bay Area Regional Reliability (BARR)

## Bay Area Clean Water Agencies

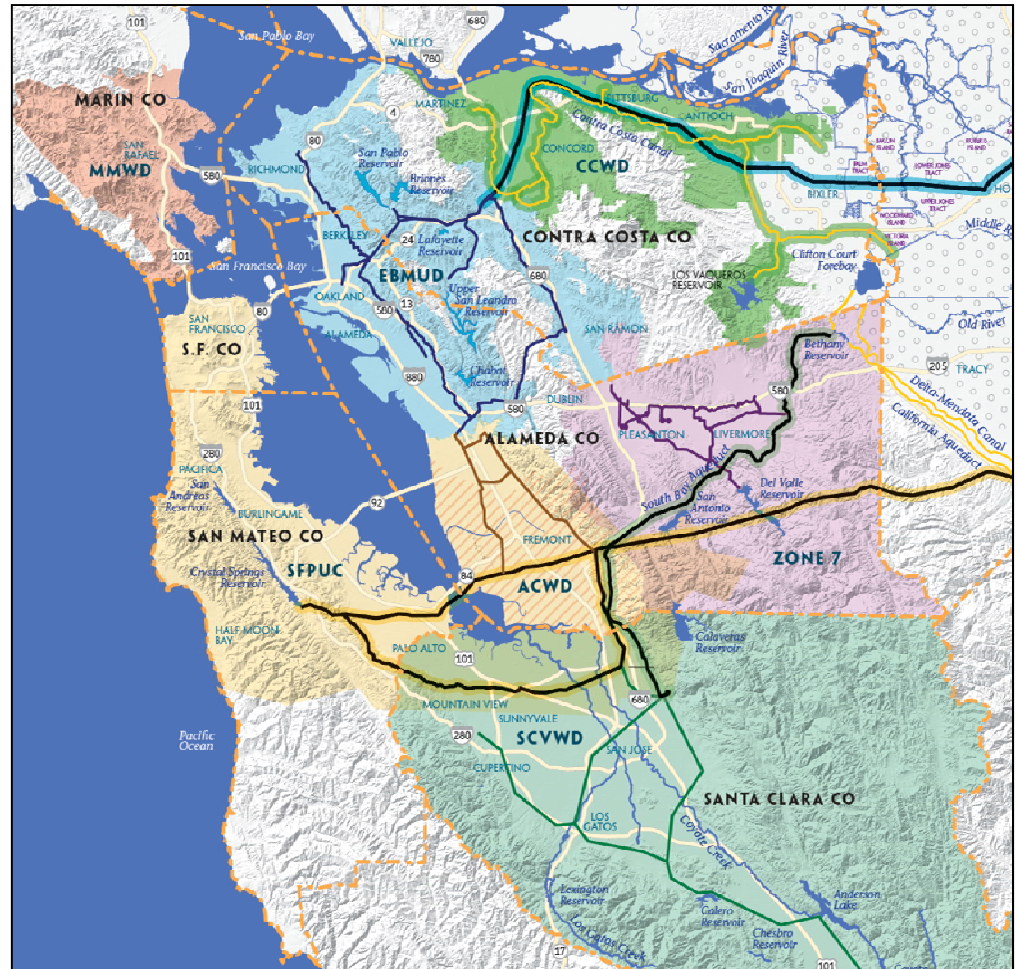
July 15, 2016

Douglas Wallace, Environmental Affairs Officer  
East Bay Municipal Utility District

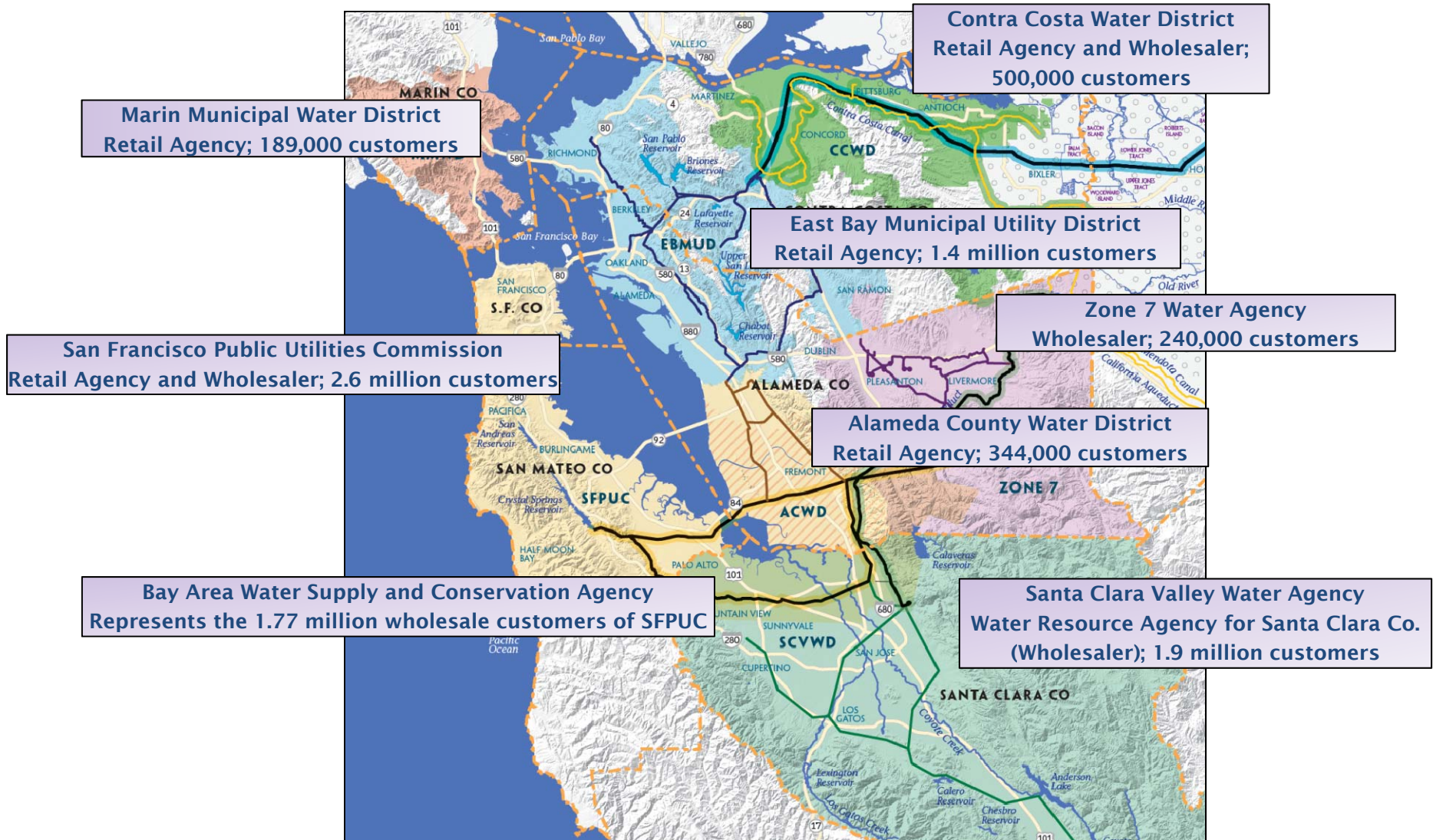


# Background

- BARR Principles adopted by Agency Boards in May/June 2014
- BARR Drought Contingency Planning (DCP) Grant obtained from Bureau - Sept. 2015
- DCP Kick-off - March 2016



# Eight Partner Agencies

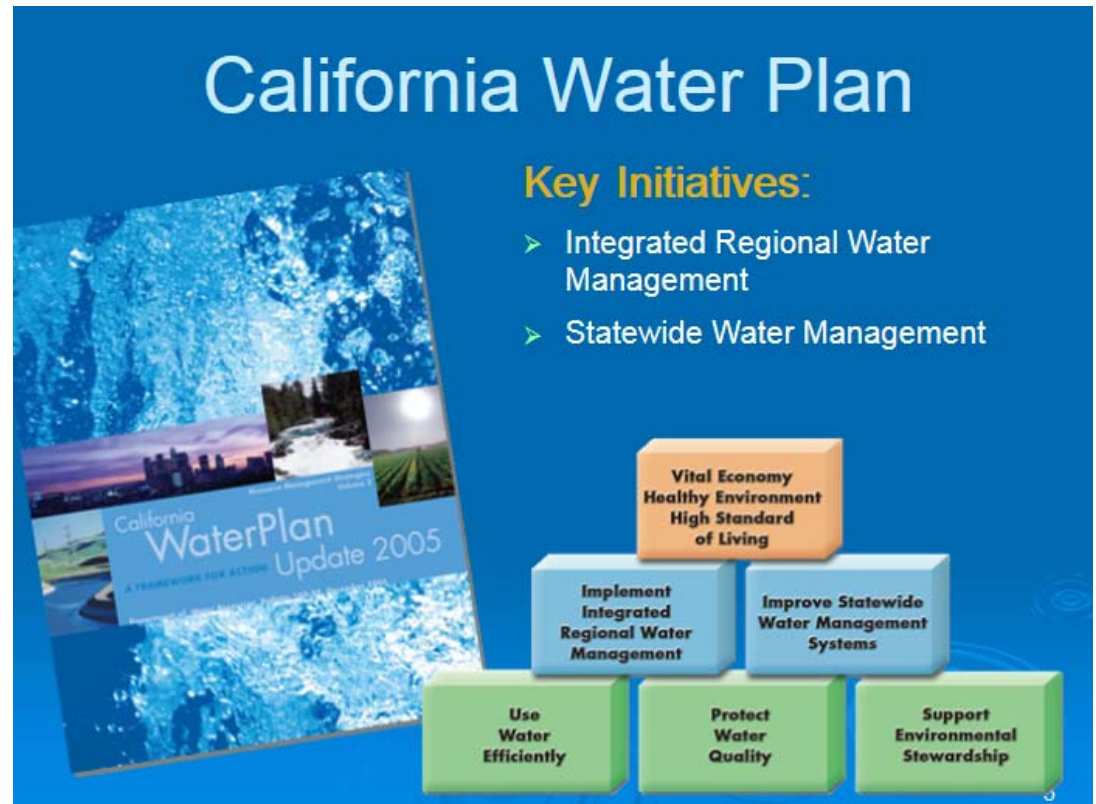


# Goals

- Improve water supply reliability
- Cooperatively evaluate projects
- Prioritize use of existing infrastructure
- Evaluate potential new joint facilities
- Investigate equitable cost- and risk-sharing for future projects

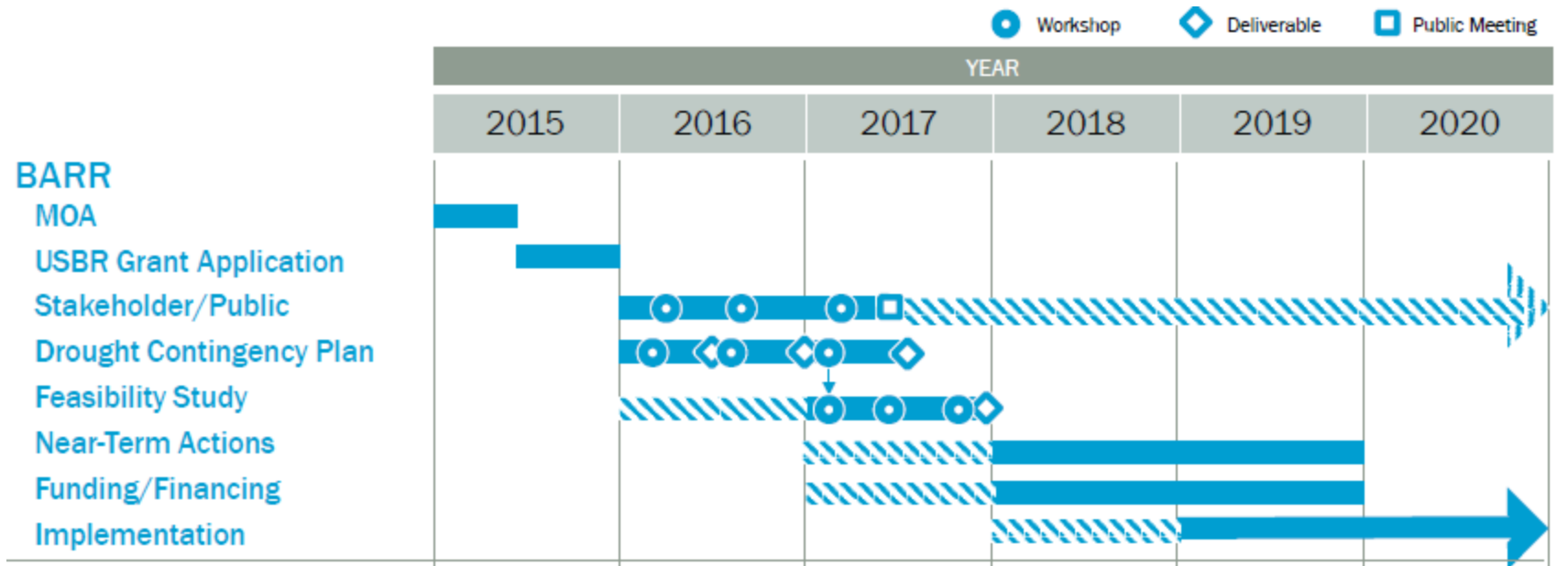
# Priorities

- Use existing facilities
- Leverage existing contracts
- Identify new projects (interties, etc.)
- Review other source opportunities (recycled water, storm water, indirect and direct potable reuse, etc.)
- Promote water conservation
- Prepare for an uncertain water supply



*The Concepts and Principles behind Bay Area Regional Reliability are aligned with the California Water Plan and with the State's Integrated Regional Water Management Program*

# Framework



Currently working on Drought Contingency Plan (DCP), an effort partially funded by the U.S. Bureau of Reclamation

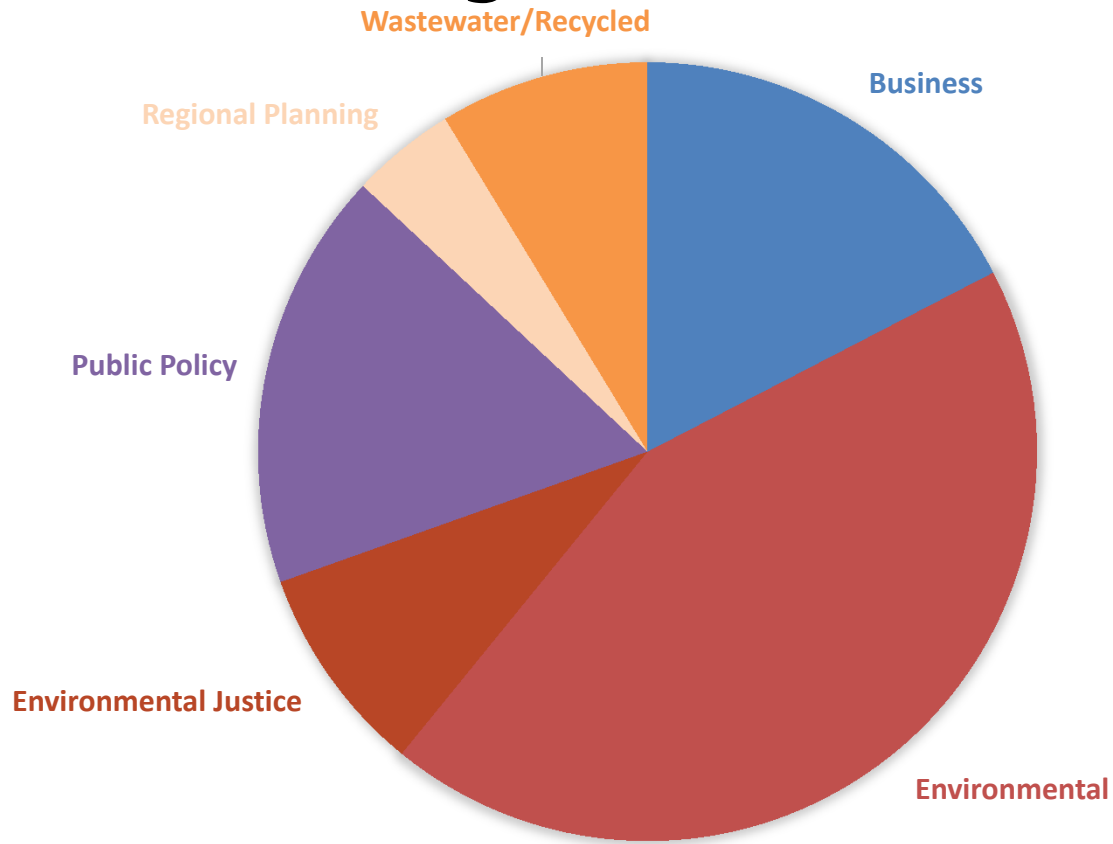
# Funding

Costs	Funding Source
Drought Contingency Plan \$ 473,500	Grant (Bureau of Reclamation Water SMART) = \$200,000 BARR Agencies = \$273,500
DCP Subtotal	\$473,500
Available for Future Work <sup>1</sup> = \$ 126,500	BARR Agencies = \$126,500
Total = \$600,000	Total = \$600,000

Notes:

1. Additional grants or agency contributions beyond \$126,500 currently committed may be used to expand the future work.

# Stakeholder Representation (Drought Task Force)



- Task Force provides input on strategies and work products
- 3 meetings scheduled to support decision making

# Leverage Existing Facilities

1. CCWD/EBMUD Interties (multiple)
2. EBMUD/SFPUC Intertie
3. SCVWD/SFPUC Intertie
4. Los Vaqueros Reservoir
5. Freeport Intake (not shown on map)
6. Other existing intakes, storage, conveyance, and treatment plants (not individually numbered on map)

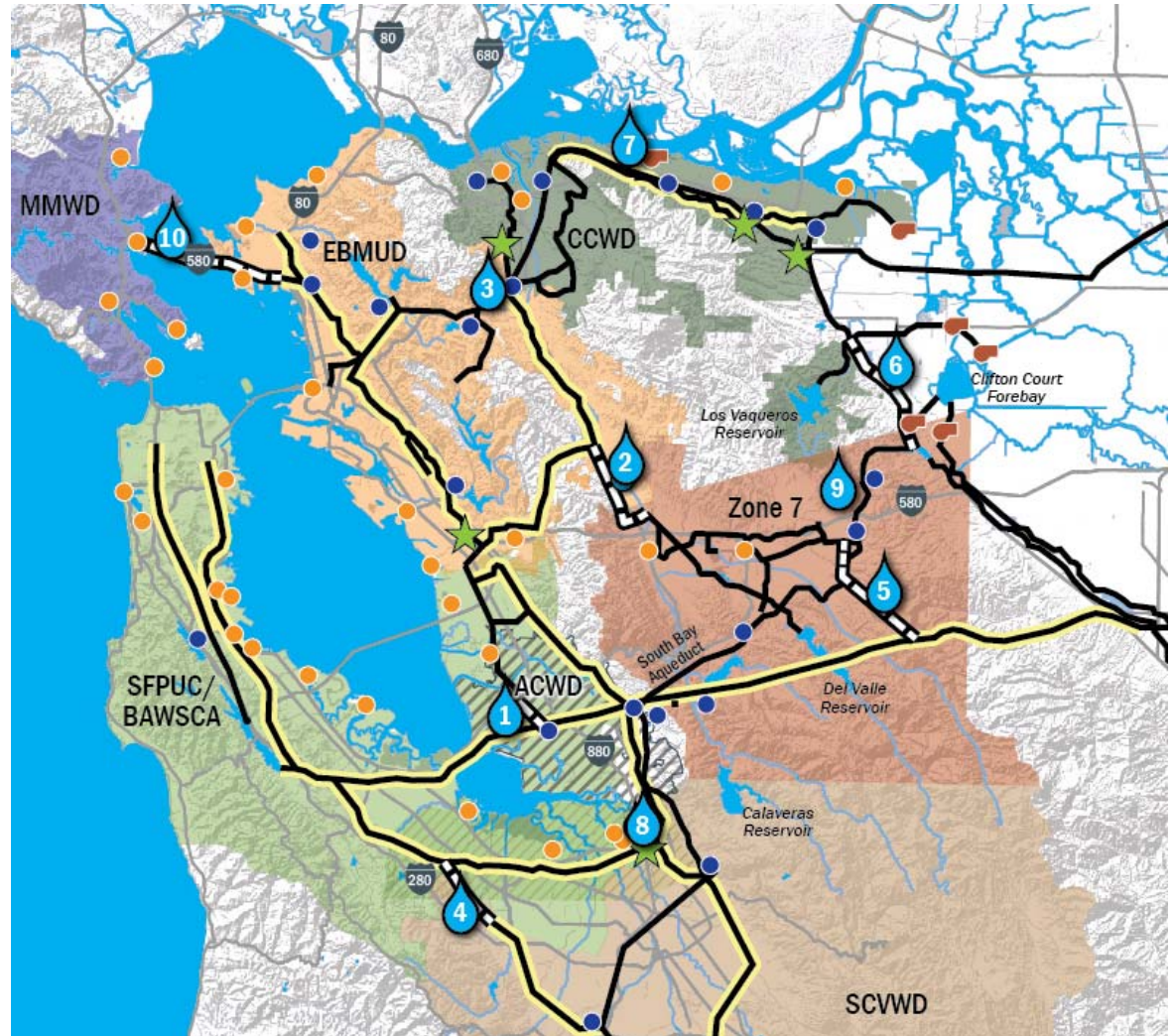


# Potential New Facilities

Solutions may include:

1. ACWD/SFPUC Intertie
2. EBMUD/Zone 7 Intertie
3. Walnut Creek Pretreatment Upgrade
4. SFPUC/SCVWD West Side Intertie
5. SFPUC/Zone 7 Intertie
6. Transfer-Bethany Pipeline
7. Regional Desalination
8. Advanced Water Purification Center Expansion
9. Well Field Expansions and Improvements
10. EBMUD/MMWD Intertie

Also anticipated is the expanded use of recycled water, including potable and indirect and direct potable use.



## Next Steps

- Complete the Drought Contingency Plan (by fall 2017)
- Initiate feasibility studies
- Identify solution portfolio to improve regional reliability
- Determine governance mechanisms to facilitate regional reliability (JPAs, Inter-Agency Agreements, etc.)
- Evaluate financial approaches
  - Federal, State, agency etc.

# Questions?