

# City of Santa Rosa's Biosolids Management Program

Zachary Kay

BACWA Biosolids Committee Meeting

September 20, 2018



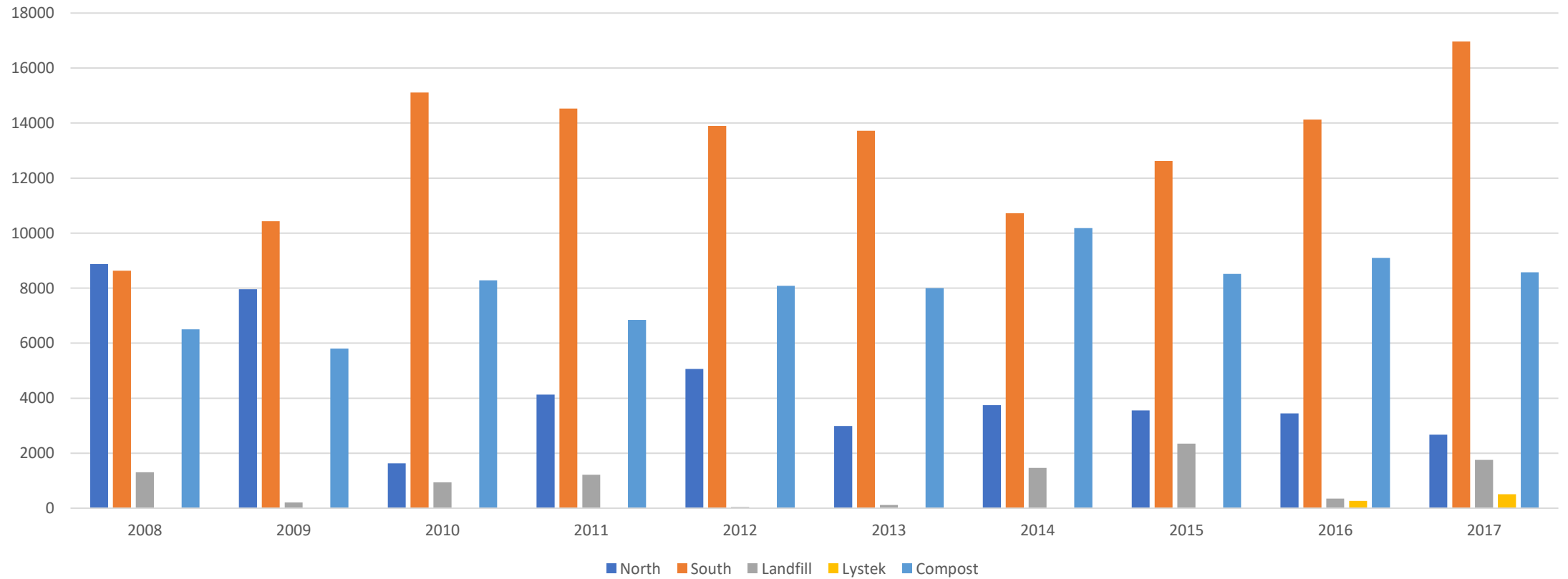
## The Subregional **B**iosolids **M**anagement **S**ystem follows a three legged stool theory

---

- Compost – is our wintertime disposition route because it is weather independent.
- Land Application – is our dry weather route. We use biosolids from our storage facilities that was stored from November 1 to May 1 for land application. The rest of the biosolids for land application are hauled directly from the treatment plant from May 1 through October 31.
- Landfill – is used when necessary, as a pressure relief. Lystek will replace landfill as the third leg on the stool.

# 2008 to 2017

Tons Distribution

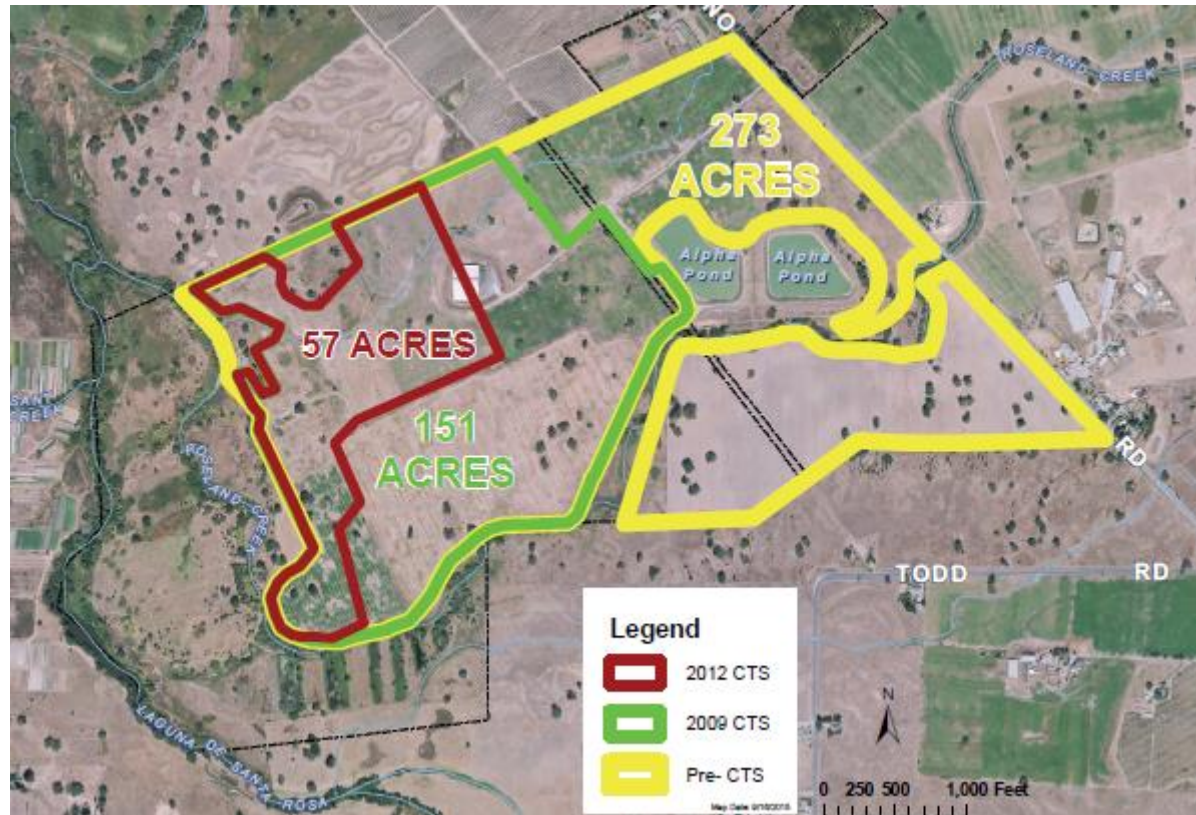


	Pre CTS	Lost acreage NoCo	Gained acreage in SoCo. Did not spread Brown.	Lost Dickson in SoCo		Lost more acreage at Alpha	Gained Stone in NoCo. Reduced tons per acre in SoCo.		Gained 3 new farms	High Strength Waste on line Purchased Twin House Farm	
	2008	2009	2010	2011	2012	2013	2014	2015	2016	2017	
North	8872	7958	1635	4133	5060	2989	3751	3554	3446	2676	
South	8634	10432	15109	14532	13893	13722	10725	12623	14133	16968	
Landfill	1306	210	942	1220	47	116	1466	2349	355	1758	
Lystek	0	0	0	0	0	0	0	0	266	510	
Compost	6500	5800	8285	6841	8082	8005	10180	8514	9101	8578	
ttl	25312	24400	25971	26726	27082	24832	26122	27040	27301	30490	

California Tiger Salamanders are endangered, and are consequently a significant constraint for land application

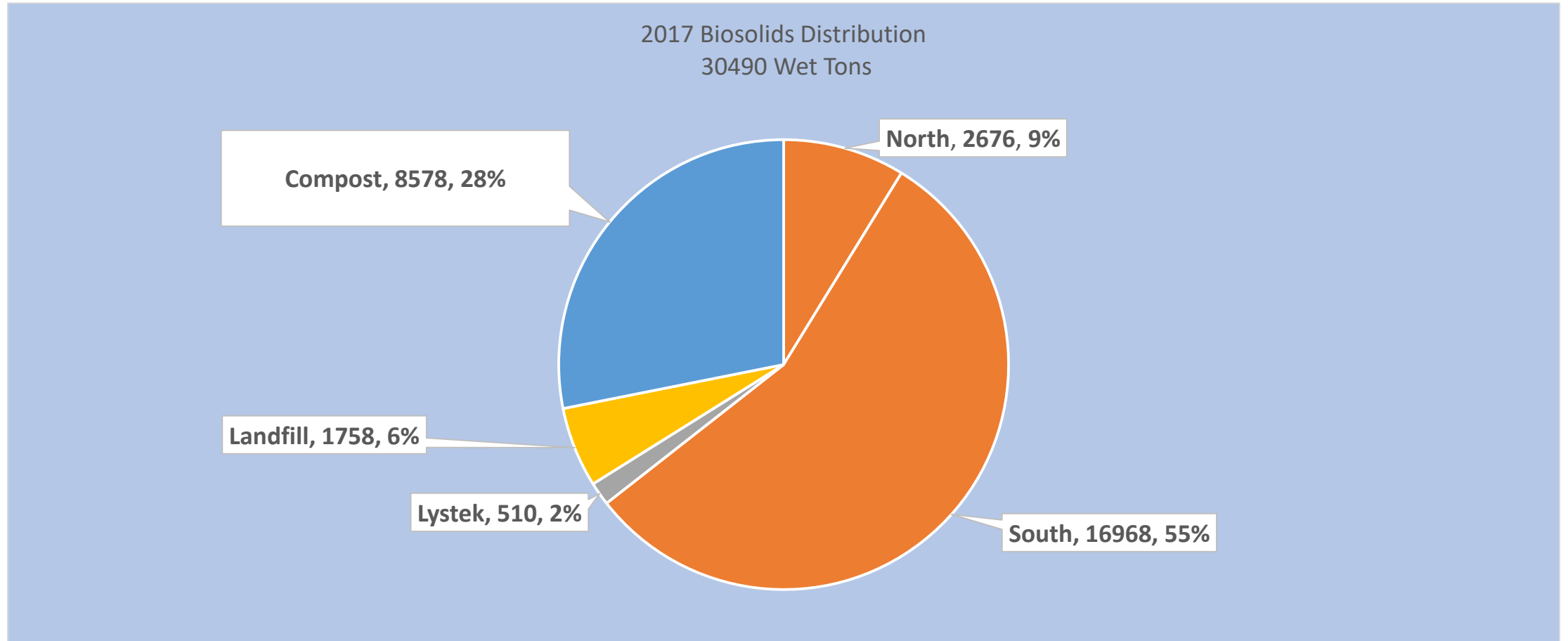


The existence of CTS has had significant impacts on City Owned biosolids land applications sites



- Over 1000 acres were available for land application before CTS constraints came into play.
- 188 acres are available now as CTS constraints exist today.
- The net impact is over a 70% reduction in effective land application acreage on City Owned Farms.

# 64% Land Application





ALPHA Biosolids Storage Facility  
7,000 Wet Tons Capacity